



City of Richmond

When it Rains – it Pours Why we need a Stormwater Utility

7th District Meeting March 27, 2010

Bob Steidel - Deputy Director, DPU

Chris Beschler – Director, DPU



Understanding Stormwater

What is Stormwater?

Precipitation from rain/melting snow that **DOES NOT** soak into the ground. Impervious surfaces like driveways, parking lots, roads and roofs prevent stormwater from soaking in.

Stormwater Issues:

- **Flooding**
- **Pollution**
- **Poor Water Quality**
- **Soil Erosion**





Understanding Stormwater

Where does it go?

Stormwater travels to the James River through...

35,000 catch basins

370 stormwater outfalls

200 private BMP's (example: retention pond)

50 public BMP's

608 miles of drainage ditches

178 miles of storm sewers

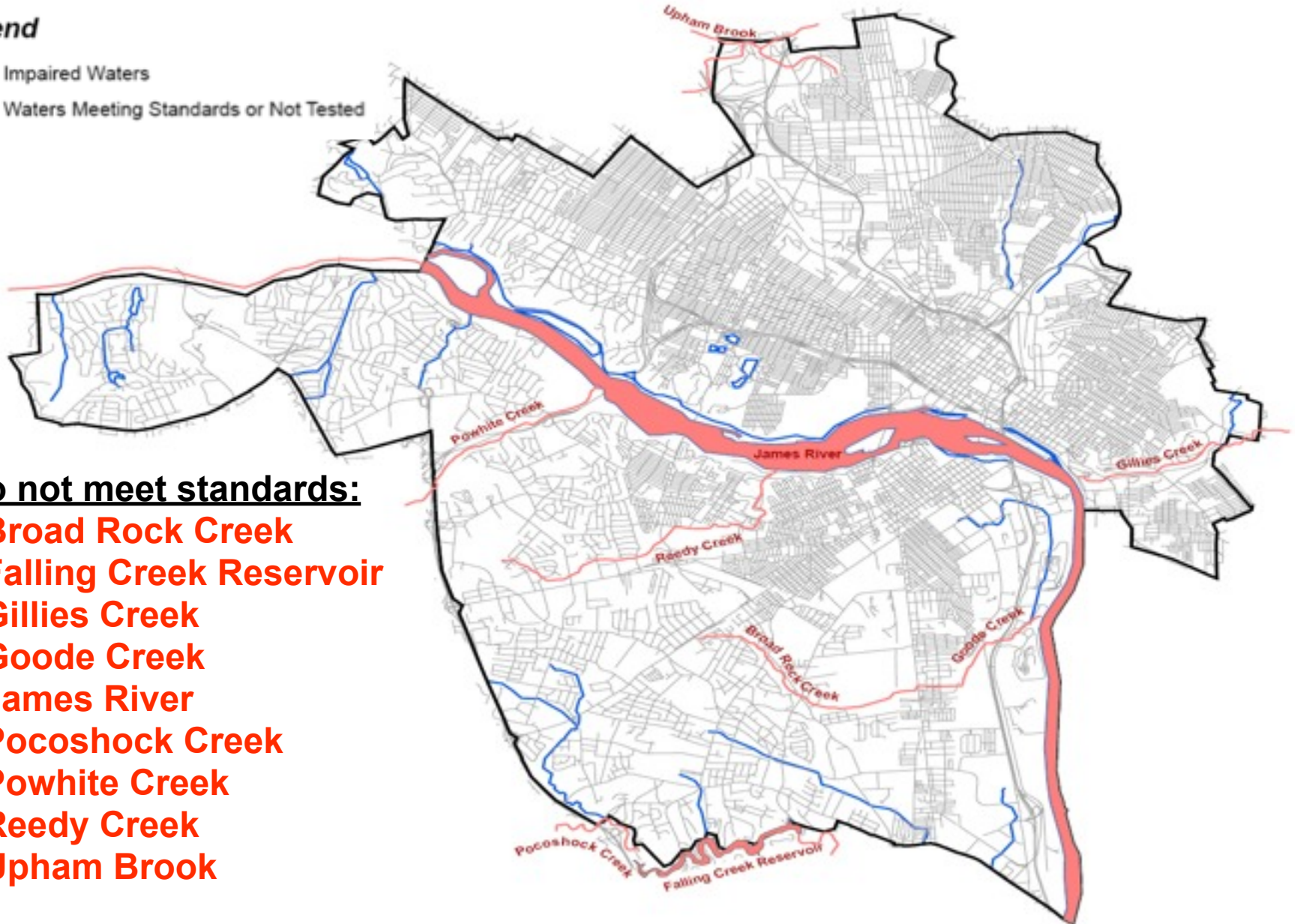
6.5 miles of polluted creeks and streams



Understanding Stormwater Richmond's Polluted Waters

Legend

- Impaired Waters
- Waters Meeting Standards or Not Tested



Do not meet standards:

- Broad Rock Creek
- Falling Creek Reservoir
- Gillies Creek
- Goode Creek
- James River
- Pocoshock Creek
- Powhite Creek
- Reedy Creek
- Upham Brook



Understanding Stormwater

What is the law?

We have to reduce/improve both

Quantity of Stormwater

Quality of Stormwater





Understanding Stormwater: Management Goals

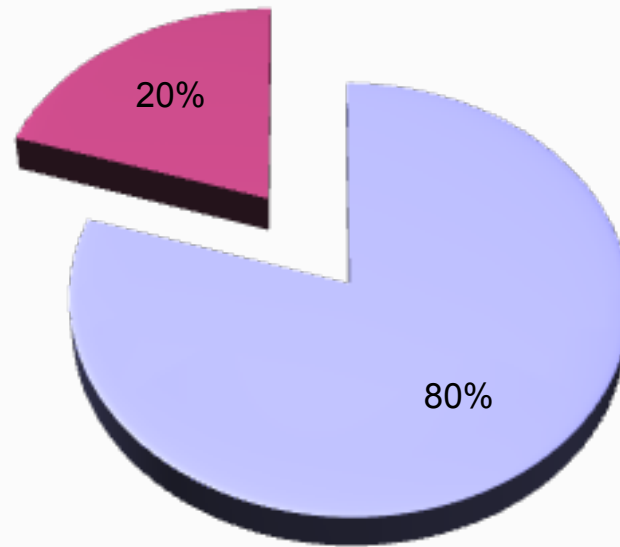
- **Protect public and environmental health**
- **Protect residential, commercial, industrial & public properties**
- **Improve and protect public safety and mobility**
- **Improve economic opportunities with better drainage**





Understanding Stormwater: Pollution Sources

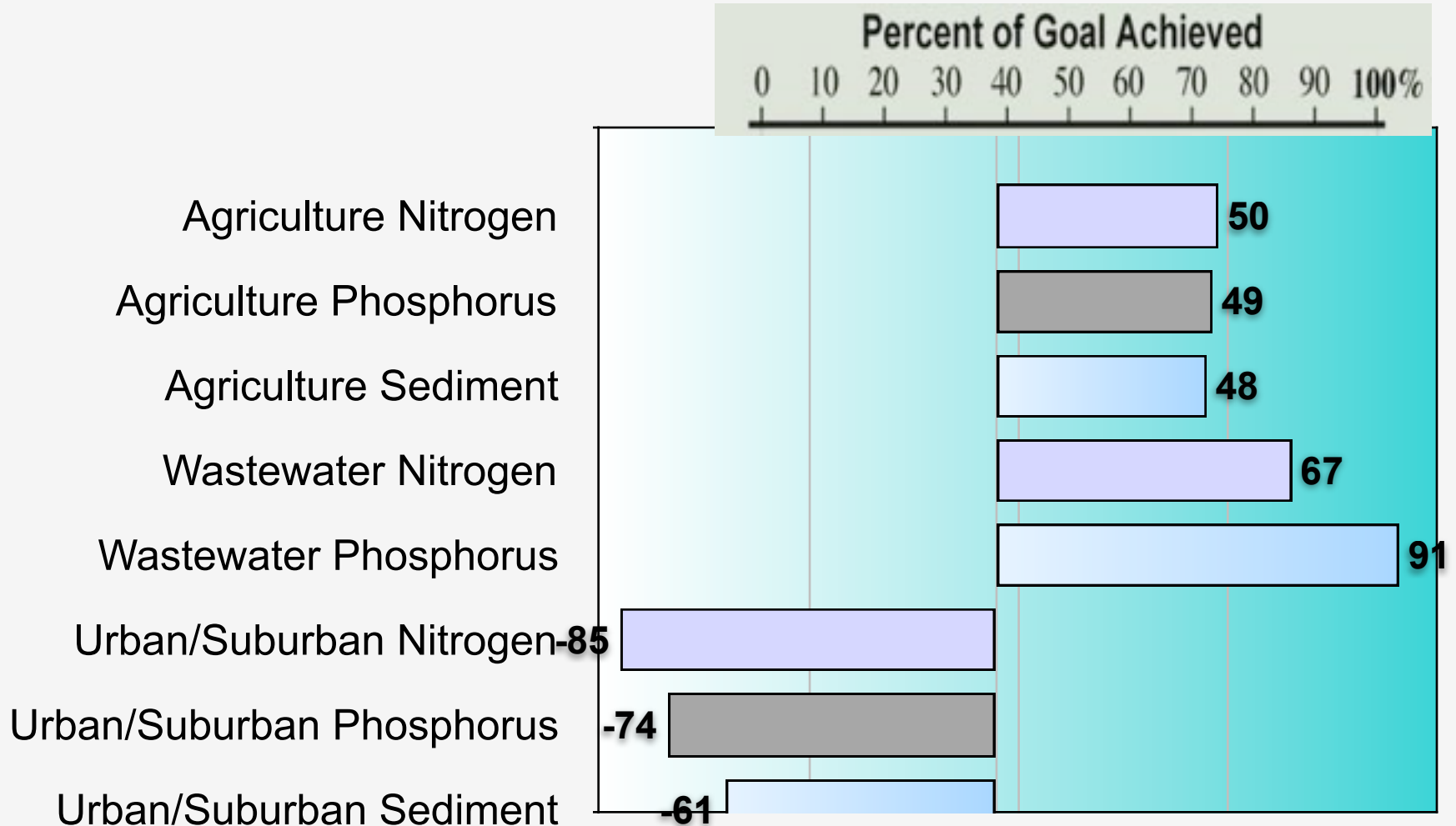
- **Contributors to Chesapeake Bay Pollution**



- Agriculture & Stormwater Runoff
- Wastewater Treatment Plants and Industry



Understanding Stormwater - Pollution Reduction Progress in the Chesapeake Bay Watershed

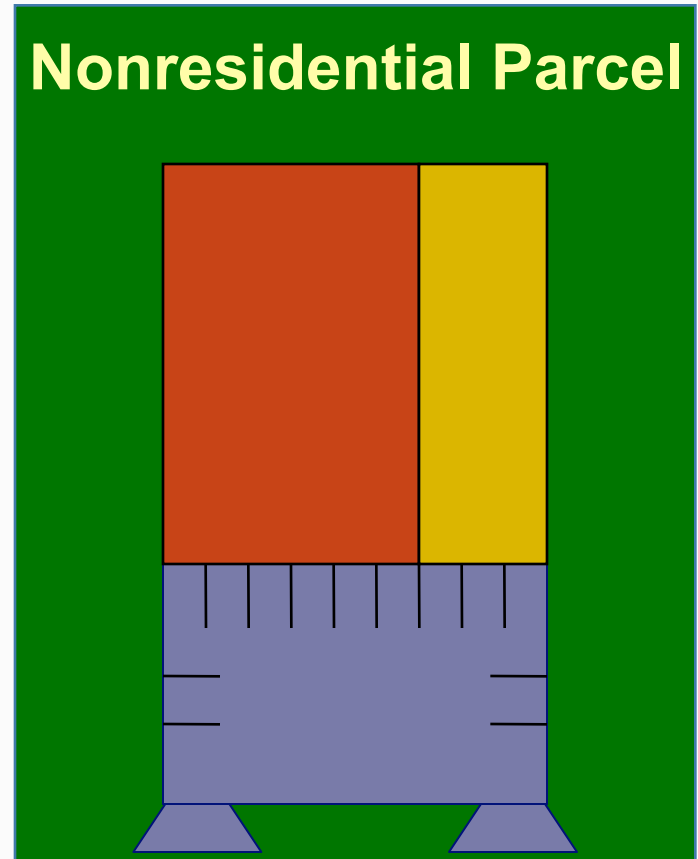


Data and Methods: www.chesapeakebay.net/status_reducingpollution.aspx



Understanding Stormwater Billing Unit Calculation

Building Area	10,000Ft ²
Parking	3,250 Ft ²
Other Impervious Area	1,000 Ft ²
Total	14,250 Ft ²



$$14,250 = 10 \text{ ERUs}$$

1 Equivalent Residential Unit = 1,425 sq. ft



Understanding Stormwater Rates by Customer Category

We have a three tiered rate structure for single family residential (SFR) parcels based on the amount of impervious surface area :

Rates per SFR (*Impervious sq. ft*)

	<u>Annual Rates</u>	<u># Customers</u>
1,000 sq. ft. or less	\$25	7,906
1,001-2,399 sq. ft.	\$45	32,449
2,400 sq. ft. or more	\$70	7,609

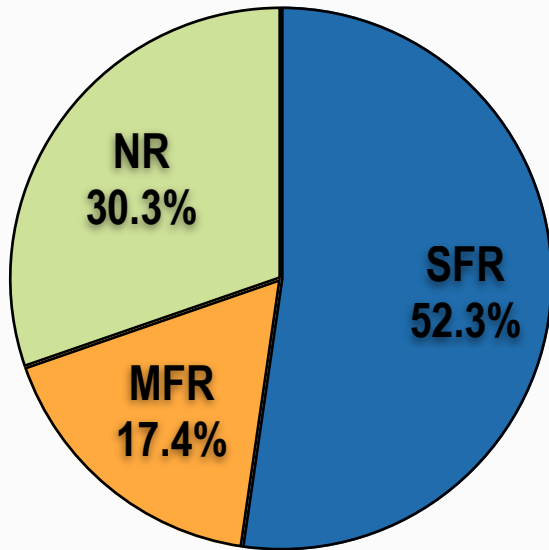
Non-residential properties are charged **per # of Equivalent Residential Units (ERU's)**. One ERU = 1,425 sq. ft.

Rates per ERU (*1 ERU =1,425 sq. ft*)

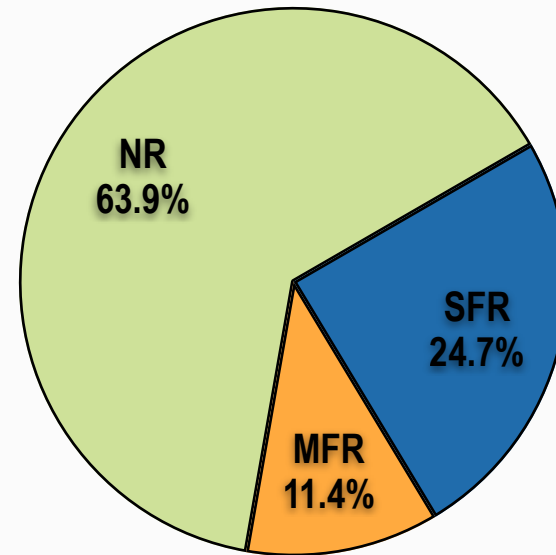
<u>Annual Rates</u>	<u># Customers</u>	
Multi-family Residential	\$45	11,220
Non-Residential	\$45	8,878
<i>(includes commercial, industrial, non-profits, churches)</i>		



Understanding Stormwater Taxes vs. Fees



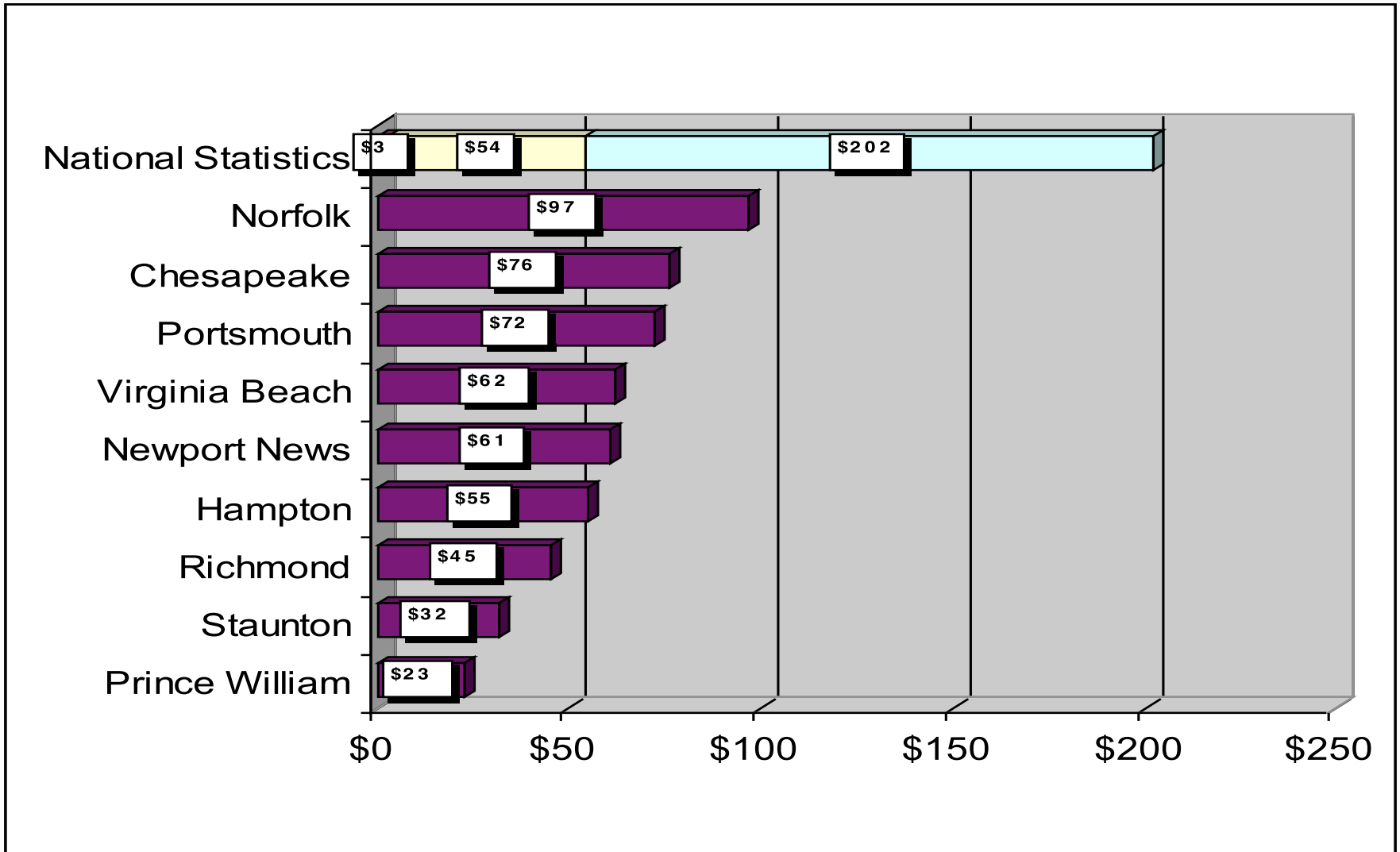
**Real Estate
Taxes**



**Stormwater Utility
Fees**



Understanding Stormwater Fee Comparison to other localities



National Statistics Based on Survey of 70 Facilities (B&V, 2007)



Understanding Stormwater Exemptions and Credits

- **Non-residential properties are eligible for partial credits that meet defined criteria**

Property Category	Onsite Facilities to Control Quantity	Low Impact Development (LID)	Participation in Pollution Prevention and/or Lawn Care Program	Maximum Allowable Credit
Non –Residential <i>(includes commercial, industrial, non-profit, churches)</i>	Up to 20%	Up to 20%	Up to 20%	50%



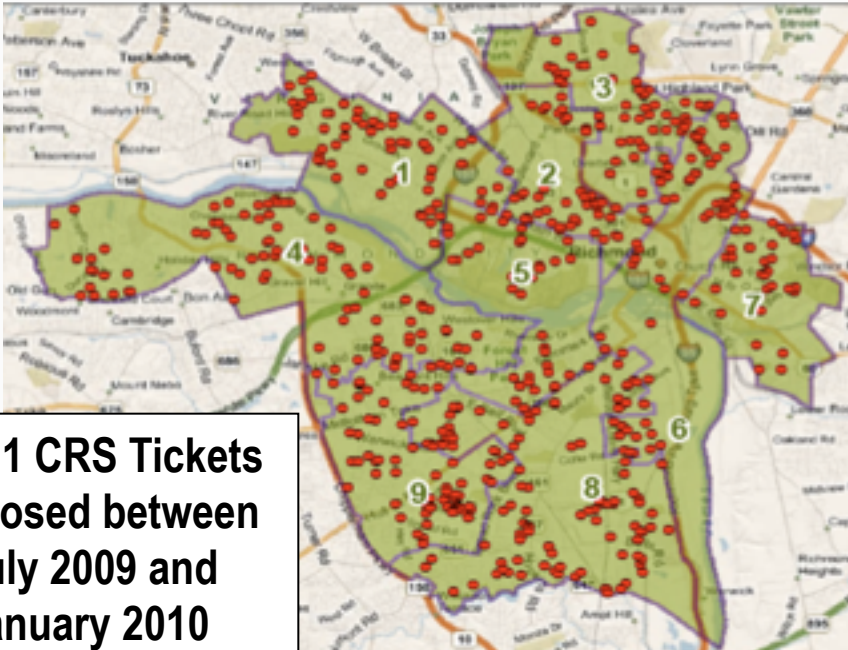


Understanding Stormwater Payment Options

- **How to pay**
 - Mail in payment
 - Pay by credit card on City website
 - Pay in person at City Hall and East District Initiative
- **Payment Assistance**
 - Call 644-3000
 - Customized payment plan to fit your needs



Understanding Stormwater Completed Maintenance Requests



611 CRS Tickets Closed between July 2009 and January 2010

Council District	# Closed Service Requests	Cost
1	70	\$240,830
2	55	\$192,195
3	55	\$182,595
4	95	\$329,355
5	41	\$130,269
6	67	\$220,703
7	37	\$122,633
8	119	\$405,571
9	72	\$247,048

Total: \$2,071,199



City of Richmond



Discussion